

# MGC

## MUTUAL GROUP OF COMPANIES

AVIATION



EXPLOSIVES



TECHNOLOGIES



PROPERTY DEVELOPMENT



QUARRYING & CONSTRUCTION



# GROUP PROFILE

[WWW.MUTUALGROUP.CO.ZA](http://WWW.MUTUALGROUP.CO.ZA)

**THE MUTUAL GROUP OF COMPANIES**

[www.mutualgroup.co.za](http://www.mutualgroup.co.za)

**Represented by Mr. Mike Barnes**

Mike Barnes, a respected and successful entrepreneur with over 40 year's business experience, started MCC Plant Hire in 1972. MCC Plant Hire grew to contain the world's biggest privately owned fleet of graders, consisting of 140 Caterpillar graders and various other earthmoving equipment. In 1986, the MCC Group expanded into open cast mining and through a proactive and hands on philosophy, grew MCC Contracts into one of the largest open cast mining contractors on the African continent. The MCC Group now owns in excess of 1800 earthmoving machines, with a replacement value in excess of R3 billion.

With the company expanding into Africa, Mike decided to invest in aircraft as well. MCC Aviation now operates as a stand alone, 1st Class Air Charter Company with a fleet of a dozen wholly owned aircraft , including intercontinental Gulfstream Jets as well as 5 Bell Helicopters, to name but a few.

Property development is Mike's second passion in life, having developed entire suburbs and residential estates. Concentrating on up market residential developments, Mike has formed a reputation in the property industry for delivering high quality and extremely stylish luxury apartments. Mike has formed a team of experts consisting of architects, quantity surveyors and an extremely competent and professional project manager in Roes Van Achterbergh, who has been in the property development industry for over 30 years.

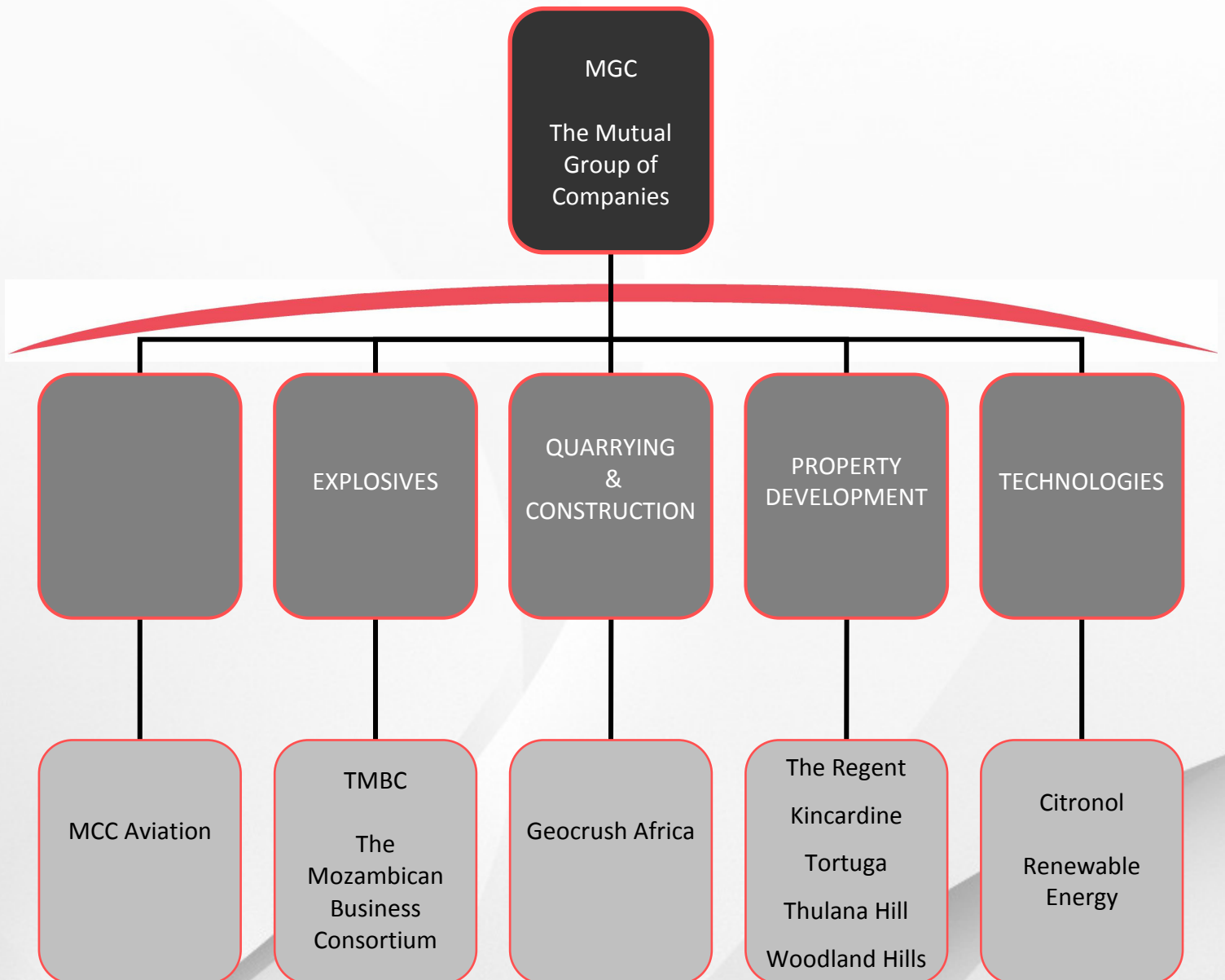
Mike has since sold the MCC Group and is now focusing his efforts under a new brand name, the Mutual Group of Companies or "MGC." Mike's experience in diverse industries including explosives (Explotec and Nonex) as well as mining and construction (MCC Plant Hire and the Mutual Construction Company) have equipped him with hands on knowledge and experience to pursue new lines of business in various sectors.

The new MGC (Mutual Group of Companies) uses the various core competencies of the companies within the group structure to focus on the infrastructure development of African nations such as Mozambique, DRC and Angola, amongst others. Lately, MGC is expanding its portfolio to include new technologies and in doing so, is diversifying into the mobile and modular electricity and power provision industry, particularly in the Northern areas of Mozambique.

**The Mutual Group of Companies**

[www.mutualgroup.co.za](http://www.mutualgroup.co.za)

MGC is an umbrella brand which has a direct interest in several companies serving a diverse scope of industries from Aviation to Construction. A breakdown of the group is depicted here below:



# GROUP STRUCTURE



## AVIATION: MCC Aviation

MCC Aviation is an established fixed and rotor wing Air Charter service operator, based at Lanseria International Airport. MCC Aviation operates a 100% internally owned fleet of several small to large piston and turbine prop aircraft, passenger jets as well as a formidable fleet of turbine helicopters; all of which are flown by first class pilots, trained by manufacturer approved facilities both locally and abroad. We offer the full charter spectrum of VVIP, corporate, leisure, tourist and scenic flight services.

No charter requirement is too big or too small, around the world and around the clock.



Uniquely certified to operate Part 121, 127 and 135 Air Operating Certificates, MCC Aviation has achieved success in the aviation sector due to its unique approach in the market: every single function, be it ticketing to takeoff or from aircraft parts to pilots, is performed in-house with 100% accountability and exactly to client specification. Besides the company owned aircraft, MCC Aviation exclusively manages various other aircraft on behalf of their owners, enabling us to offer our clients more versatile solutions across the board.

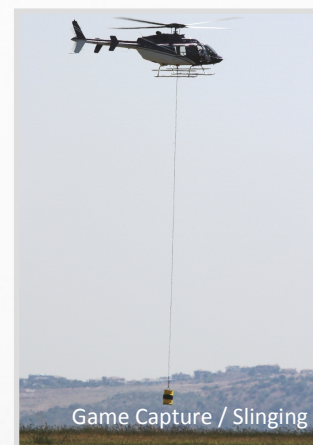
## FACILITIES AND INFRASTRUCTURE

As part of the complete end to end service on offer, all clients have access to a private VIP Lounge in the main terminal building. Use this facility at your leisure to relax with your loved ones before a holiday flight or as a convenient area to check emails or make a few phone calls before you depart on a business trip.





Complimentary warm and cold refreshments, newspapers, transfers and a concierge service are also on hand to ensure that every single requirement is taken care of efficiently and exactly as per client requirements. The VIP Lounge also houses our charter office which is open daily from Monday to Friday during business hours with manned telephones after hours to ensure 'round the clock availability and service.



Our fully equipped training room at our base, Hangar 43, is available for on-site Crew Training such as DG, CRM & SEPT. MCC Aviation is actively involved in Mozambique, with a satellite Helicopter operation in the Northern Areas providing daily aerial support and transport to mining and construction activities in the area. On site crew and maintenance staff ensures uninterrupted service delivery and a diverse, internally owned fleet ensures redundancy across all platforms.

[www.flymcc.co.za](http://www.flymcc.co.za)



*MCC AVIATION*

*Connecting the Continent*



## EXPLOSIVES: The Mozambican Business Consortium

[www.tmbc.co.za](http://www.tmbc.co.za)

Drawing on the experience of the previously associated Explotec and Nonex Blasting companies, TMBC consists of players who are leaders in their respective fields and when combined, provide the perfect mix of the 3 elements required for business success:

- specialized and Focused SKILLS
- solid FINANCIAL BACKING
- combined industry EXPERIENCE of over 60 years

TMBC boasts partners with over 26 years of uninterrupted supply of blasting technology to the mining and construction industry. Competencies are found in Coal, Uranium, Platinum, Iron Ore, Gold, Copper and Nickel. The capacity to produce and supply explosives amounts to an average production of 4500 Tonnes per month. Product and Services on offer include: ANFO to Bulk Emulsion

Blended HEF and Megapump™ with PPAN

Packaged, ShockTubing and E-Detonator Systems.

The explosive and ballistics product and service range includes state of the art implementation and tracking software and systems. An electronic data logging and reporting system with BlastMap™ technology, records all field activities during drilling and charging. It then reports back on a wealth of information which is graphically compiled quickly and painlessly.



[www.tmbc.co.za](http://www.tmbc.co.za)



TMBC's ability to lead in the explosive and blasting industry is evident in the extensive footprint throughout Africa. This also provides us with the local knowledge to provide uninterrupted supply to the locations where supply is needed the most. TMBC believes in long term partnerships, an example being Amplats (Rustenburg) with whom we have enjoyed a successful business relationship spanning over 20 years.

CLIENT	SITE	TONNS / MONTH
First Quantum	Kansanshi & MCM	650
Anglogold Ashanti	Navachab	150
Anglogold Ashanti	Sadiola/Yatela	400
Norslik	Tati Nickel	900
African Copper	Mowana Copper Project	500
I-AM Gold	Mupane	100
Optimum Holdings	Optimum Colliery	3800 - 5000
BHP Billiton	Douglas	1500 - 2000
Kumba	Sishen Iron Ore	1000
Rio Tinto	Rossing Uranium	1000
Anglo Platinum	PPL	800 - 1500
MCC	Mining Contractors	2000
Xstrata	Rivershaft	1000

Geocrush Africa takes pride in their established and secure supply chain of reputable industry leaders: It is to this end that TMBC have partnered with Symbion Power of the USA in an infrastructural development project in electricity generation. The project which is already in its early stages of development will see electricity provided on a modular basis to remote areas in the Northern parts of Mozambique.

**QUARRYING & CONSTRUCTION: Geocrush Africa**  
**Represented by Mr. Jeremy Davies.**

Jeremy has a rich background in Civil Works, with over 20 years experience in the industry.

Geocrush Africa specializes in the crushing of rock into aggregate in its numerous forms.

This is achieved through its static plants and mobile crushing infrastructure, with the ability to crush and screen most rock material. Machines are track mounted allowing deployment and operation in virtually any terrain or environment.



GeoCrush Africa has a wide range of mobile machinery including:

- Jaw Crushing, Scalping, Impact Crushing with both horizontal and vertical Shaft Impactors,
- Cone Crushers as well as double and triple deck Mobile Screeners.

Geocrush Africa has a local footprint in Mozambique through Geocrush, LDA.

Multi disciplined and African specialists, Geocrush Africa is perfectly positioned to serve as a primary supplier for all aggregate needs in Mozambique. Supply of aggregate from exclusive quarries is ensured through extensive preparation and planning which has already been completed. Geocrush Africa has access to supply sites which have already been researched, secured and paid for. These are also registered and licensed. Further sites have been earmarked as a backup for guaranteed supply. Strategic delivery points have been setup in convenient proximity to the locations requiring aggregate with static and semi mobile plants ensuring continuous supply.

Extensive personnel are employed with an assortment of crushers, earthmoving machines and vehicles which are locally available.



**PROPERTY DEVELOPMENT: The Regent**

[www.theregent.co.za](http://www.theregent.co.za)

This 10 storey residential complex houses 98 luxurious apartments and is a suburban hi-rise within walking distance from the heart of the business and shopping hub of Sandton.



The Regent is located on a very elongated site facing full North on the outskirts of the high density zone in Sandton, situated on the highest point in the area with never ending views. The building is accessed through a new roundabout created on the intersection of West Road South and Hill.

The Regent has support services similar to those offered by hotels:

- a receptionist concierge who will assist with personal needs
- a coffee shop and deli where residents can enjoy a light meal
- a meeting room
- a cigar lounge with library as well as
- a business centre for the exclusive use of the residents and their guests.



A fully equipped gym with an indoor heated pool completes this unique lifestyle environment.

[www.theregent.co.za](http://www.theregent.co.za)



### PROPERTY DEVELOPMENT: Kincardine

Kincardine is a R200 million exclusive, up market development in Kyalami which epitomizes a lifestyle of wide open spaces and tranquility in a secure environment giving you the ultimate in country living with the convenience of being just 5 minutes from Fourways CBD.

The architectural style is suited to country living with a contemporary edge, making the most of the spectacular views with large picture windows. Enjoy the luxury of space with a 10m greenbelt between each stand with understated boundaries using ranch style pillar and post railing.



[www.tortuga.co.za](http://www.tortuga.co.za)

### PROPERTY DEVELOPMENT: Tortuga

Tortuga Caribbean Estate is located between the beautiful and very similar, San Lameer Estate and the Wild Coast Sun Casino. The estate not only stretches along 1km of beautiful white pristine beach but also has access via a jetty to a 22km navigable lagoon on the un-spoilt Umtamvuna River, ideal for boating and water sports with launching facilities from the estate.

There are 30 sectional title units overlooking waterways.





**PROPERTY DEVELOPMENT: Thulana Hill**

[www.thulanahill.co.za](http://www.thulanahill.co.za)

Thulana Hill is grandly perched on top of the ridge overlooking Robberg Peninsula, Piesang Valley and the Tsitsikamma Mountains to the South, Keurbooms Lagoon and Look Out Beach to the North, with a 5 minute easy access to all amenities attractions and beaches.



Offering a wide variety of layouts, some with excellent sea views, 24hour security, swimming pools, luxury finishes and large patios, Thulana, literally meaning “place of quiet,” describes the setting perfectly.



**PROPERTY DEVELOPMENT: Woodland Hills Wild Life Estate**

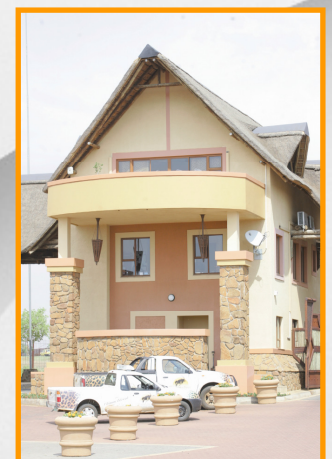
[www.woodlandhills.co.za](http://www.woodlandhills.co.za)

Woodland Hills is the first residential estate to be situated in a game reserve. It provides Free State residents with a unique lifestyle and an opportunity to live close to nature with the convenience of the city nearby. 750 plots at 1000m<sup>2</sup> each are planned as part of the first phase.

The estate is blessed with an abundance of water and more than 15 species of wildlife are already established in the estate.

Various facilities are available to residents, including:

- hiking trails
- guided wildlife trips
- tennis courts and a bowling green.



A business centre that will include a gym, an office park, a supermarket and various other convenience services will soon be developed.



**[www.citronol.co.za](http://www.citronol.co.za)**

Citronol Hand Cleaner Pty Ltd was established in July 2004 and is situated in Midrand Industrial Park, Commercia. The Company manufactures Industrial Hand Cleaners (with grit or without grit), Barrier Creams, Multipurpose Cleaners, Heavy Duty Cleaners / Degreasers, Liquid Hand Soap, Pine Gel, All Purpose Cleaner and Dish wash Liquid.

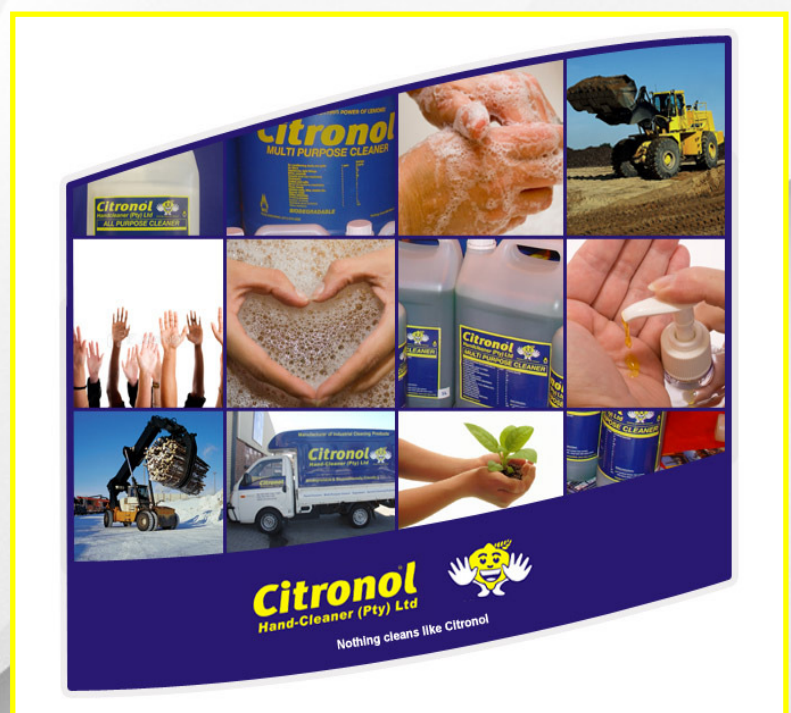
Citronol Hand Cleaning products have been marketed for two years prior to the establishment of the new company through one of the MCC Group of Companies. In 2004 Mike Barnes (owner of the then MCC Group) together with Victor Hyam (Managing Director of Citronol), established the new company in July 2004. This was done to focus the research and development of the products as well as the marketing.

The Citronol factory prides itself in producing high quality cleaning products which are biodegradable and environmentally friendly to International Standards. Material Safety Data Certificates (MSDS) are available for all products.

The Company's Mission is to increase growth, based on producing high quality products backed by a high standard of service to the industry. The current staff compliment is small with the emphasis on skills development.

Research and development is an ongoing process to improve current products standards and to evolve new products and formulas.

The Vision forward for Citronol is to establish a prominent position in the market place as a manufacturer of high quality cleaning products.



# MGC

## MUTUAL GROUP OF COMPANIES

### CONTACT DETAILS:

The Mutual Group of Companies

Physical Address: Sportron House, 2 Eaton Avenue, Bryanston, Gauteng, South Africa

Postal Address: PO Box 70310 Bryanston 2021

Office: + 27 (0) 11 706 5698

Website: [www.mutualgroup.co.za](http://www.mutualgroup.co.za)

Email: [sue@mutualconstruction.co.za](mailto:sue@mutualconstruction.co.za)

# CONTACT DETAILS